

MARLIN

PROFESSIONAL CENTER



**AVAILABLE
JUNE 2023**

7444 S US 1 Hwy, Port St Lucie, FL 34952



Unit #7444

Built-out office



- Monument Signage Available
- County: Saint Lucie
- Zoning: CG-PSL (General Commercial)
- Immediate Occupancy
- Located on S US One, just north of Prima Vista.

1,350 ±SQFT

\$2500/Month
+ Sales Tax



JOE PELAYO/CCIM, SIOR
Founder & CEO
trec@joepelayo.com
954.224.8773

CONTACT US!

TREC Total Real Estate Consultants Inc.

Note: This offering subject to errors, omissions, prior sales or withdrawal without notice.

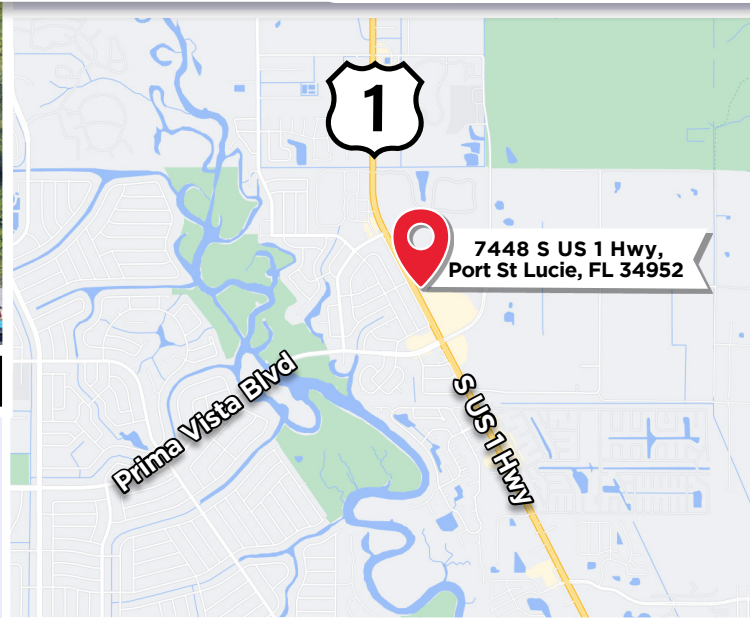
CAROLYN NIEMCZYK/CFM
Broker Associate St. Lucie County President
carolynniemczyk@gmail.com

772.359.3242



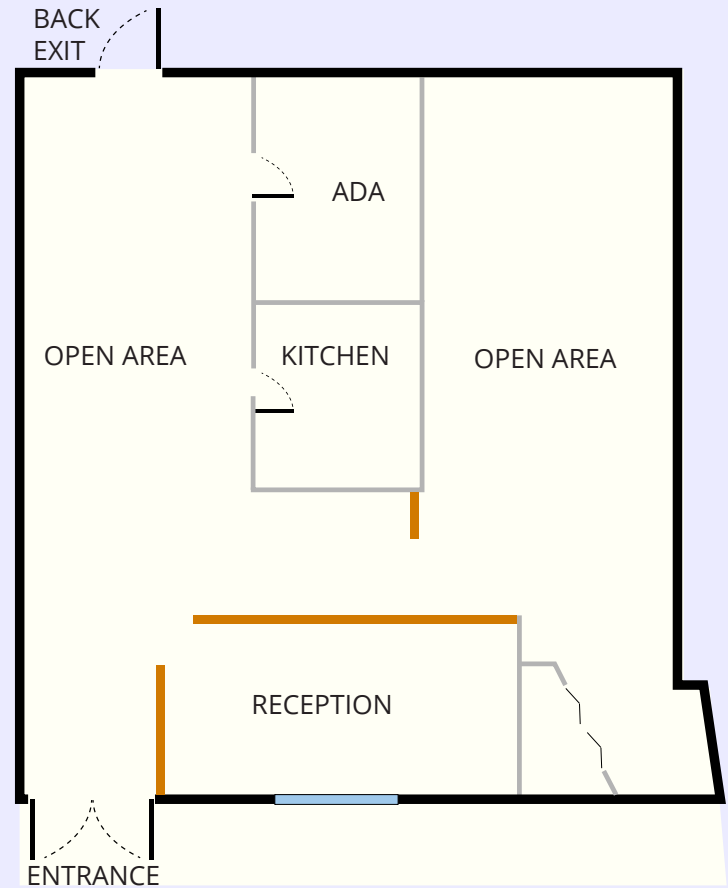
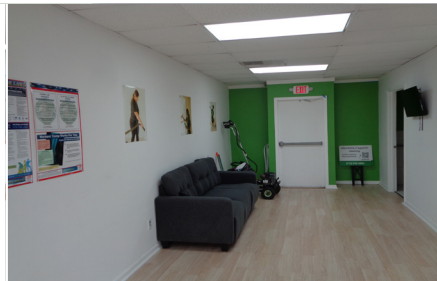
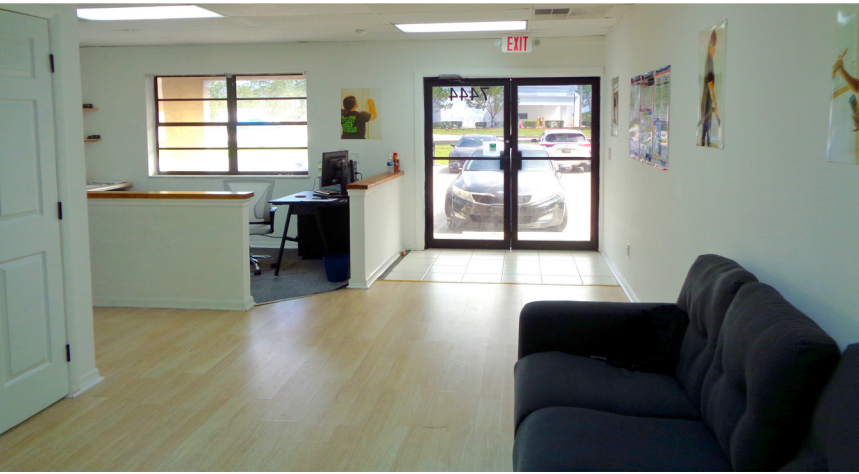


7444 S US 1 Hwy, Port St Lucie, FL 34952



Unit #7444

FLOOR PLAN



JOE PELAYO/CCIM, SIOR
Founder & CEO
trec@joepelayo.com
954.224.8773

CONTACT US!

TREC Total Real Estate Consultants Inc.

Note: This offering subject to errors, omissions, prior sales or withdrawal without notice.

CAROLYN NIEMCZYK/CFM
Broker Associate St. Lucie County President
carolynniemczyk@gmail.com
772.359.3242

