

OFFICE WAREHOUSE

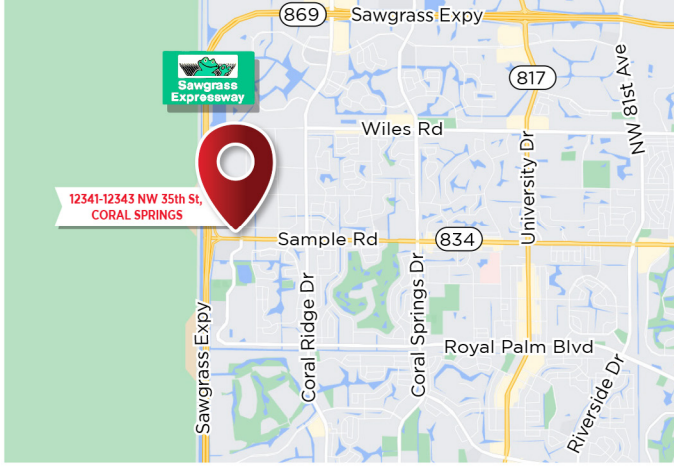
FOR SALE

CORAL SPRINGS CORPORATE PARK

Combined Units 12341-12343



12341-12343 NW 35th St CORAL SPRINGS, FL 33065



4,000 ±SQFT

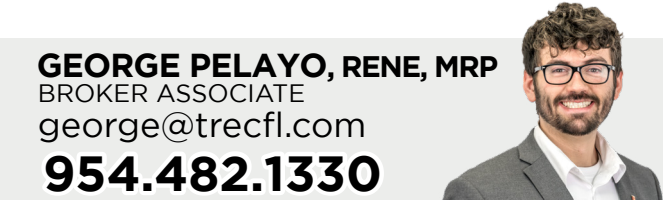
- Zone IRD (Industrial Research & Development)
- Wonderful office/warehouse 2 Stories
- Kitchenette Break room
- 3 Bathrooms (1 w/shower)
- 2 Garage Roll Up Door
- ± 21' Clear Ceiling Height

PRICE NEGOTIABLE



JOE PELAYO, CCIM, SIOR, C2EX
 BROKER
 trec@joepelayo.com
954.224.8773

TREC
 Total Real Estate
 Consultants Inc.
 www.trecfl.com
 954.341.3294

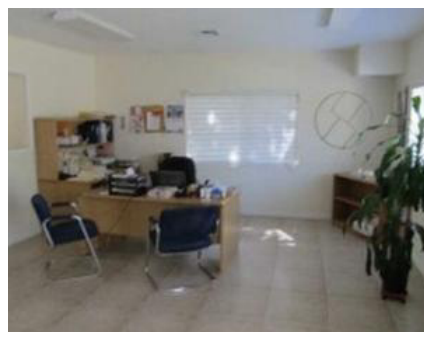
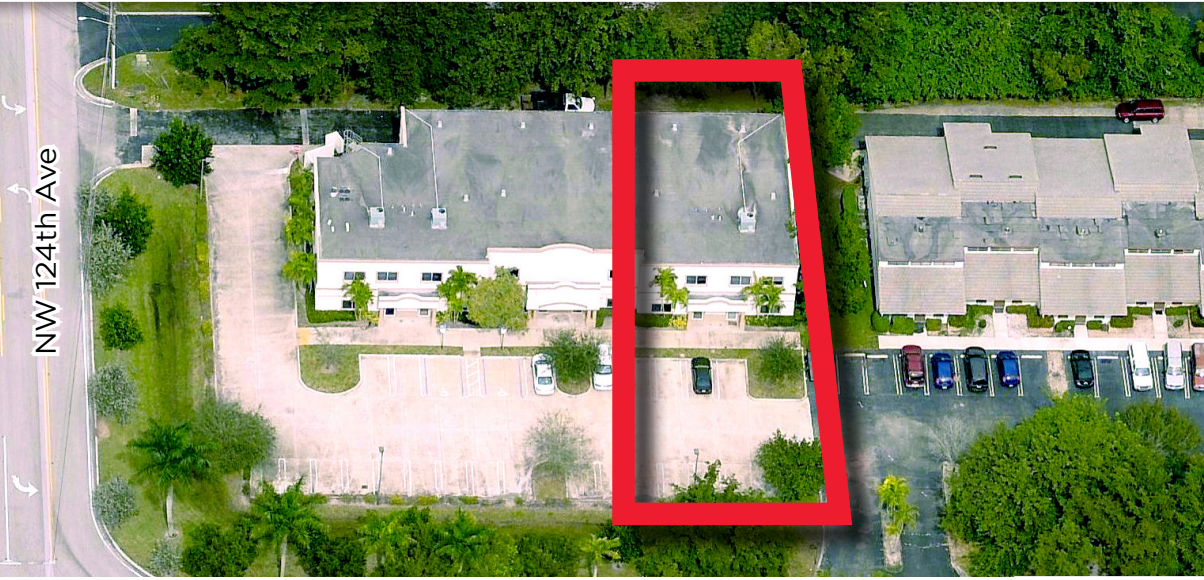


GEORGE PELAYO, RENE, MRP
 BROKER ASSOCIATE
 george@trecfl.com
954.482.1330

NOTICE: The information contained herein has been obtained from sources deemed reliable but has not been verified and no guarantee, warranty or representation, either express or implied, is made with respect to such information. Terms of sale or lease and availability are subject to change or withdrawal without notice. This information has been obtained from sources believed to be reliable but has not been verified.

OFFICE WAREHOUSE

FOR SALE



12341-12343 NW 35th St CORAL SPRINGS, FL 33065

FLOORPLAN



FIRST FLOOR

SECOND FLOOR MEZZANINE



JOE PELAYO, CCIM, SIOR, C2EX
 BROKER
 trec@joepelayo.com
954.224.8773

TREC
 Total Real Estate
 Consultants Inc.
 www.trecfl.com
 954.341.3294

GEORGE PELAYO, RENE, MRP
 BROKER ASSOCIATE
 george@trecfl.com
954.482.1330



NOTICE: The information contained herein has been obtained from sources deemed reliable but has not been verified and no guarantee, warranty or representation, either express or implied, is made with respect to such information. Terms of sale or lease and availability are subject to change or withdrawal without notice. This information has been obtained from sources believed to be reliable but has not been verified.