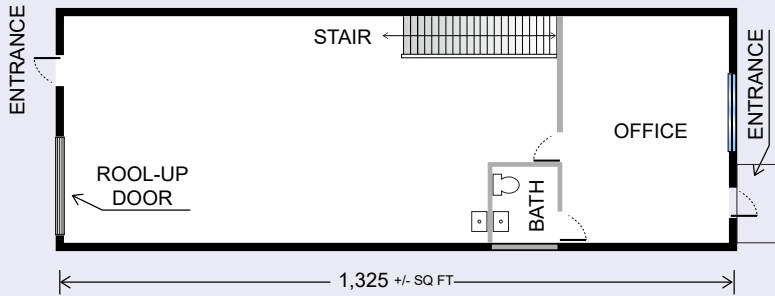


CORAL SPRINGS CORPORATE PARK

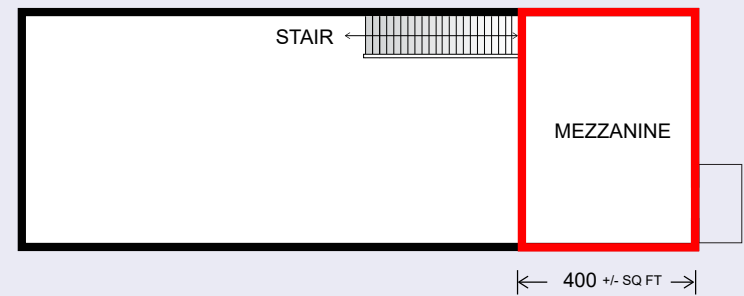
12349 NW 35th St, Coral Springs, FL 33065

FLOOR PLAN

FIRST FLOOR



MEZZANINE



- 1,325+/- SQ FT Warehouse First Floor (21.1'x62.8')
- +/- 340 SQFT Office / 400+/- SQ FT Mezzanine
- Garage Roll Up Door
- 21' Clear Ceiling Height
- Zone IRD—Industrial Research & Development
- Corner building 124th Ave/ 35 Street

1,721 ±SQFT

**PRICE
NEGOTIABLE**

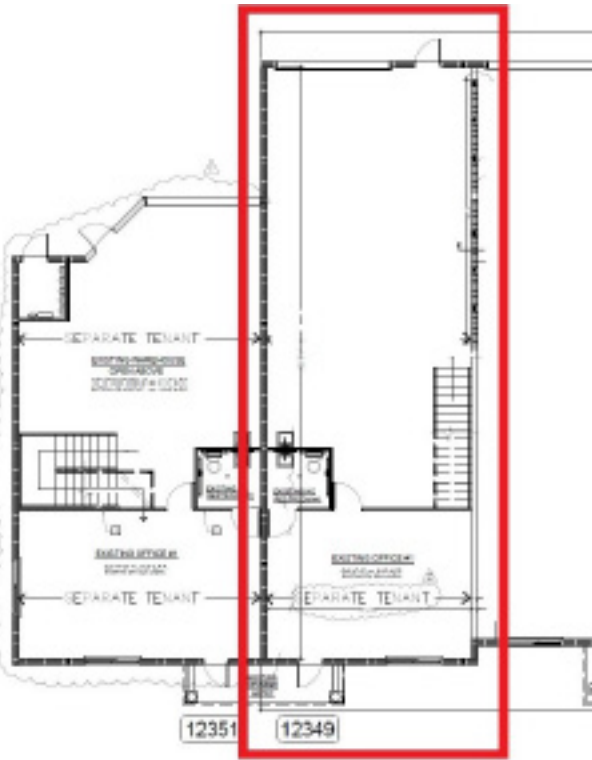


JOE PELAYO, CCIM, SIOR, C2EX
BROKER
trec@joepelayo.com
954.224.8773

TREC
Total Real Estate
Consultants Inc.
www.trecfl.com
954.341.3294

GEORGE PELAYO, RENE, MRP
BROKER ASSOCIATE
george@trecfl.com
954.482.1330





JOE PELAYO, CCIM, SIOR, C2EX
BROKER
trec@joepelayo.com
954.224.8773

TREC
Total Real Estate
Consultants Inc.
www.trecfl.com
954.341.3294

GEORGE PELAYO, RENE, MRP
BROKER ASSOCIATE
george@trecfl.com
954.482.1330

